



84. Bristol, CT



COURTESY: CITY OF BRISTOL

WINNER

Top 100 rank: 84

Population: 61,000

ESPN has its headquarters here, but that's not the only reason people in Bristol are excited about sports. Strong high school soccer and baseball teams have residents cheering all year long.

If they want more excitement they can venture to the rides at Lake Compounce, the nation's oldest continuously operating amusement park (it dates back to 1846).

But that's nothing compared to the age of the town itself: It's celebrating its 225th anniversary. --N.A.

Bristol stats

	City stats	Best places avg.
Median family income (per year)	\$74,650	\$90,957
Job growth % (2000-2009) *	1.52%	15.71%
See jobs near Bristol		
Median home price	\$173,000	\$239,391

Advertisement

Print Powered By FormatDynamics™

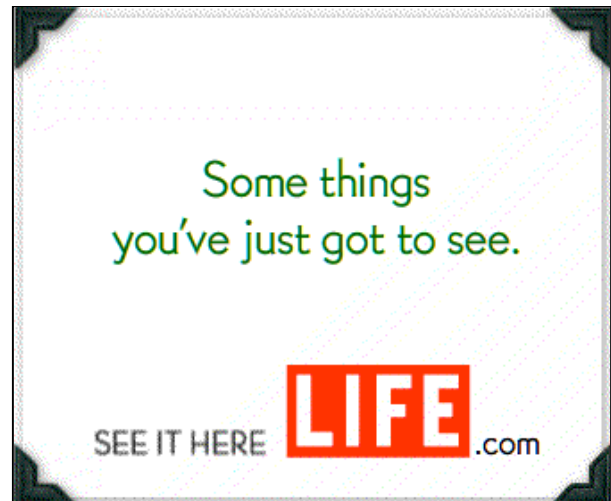


	City stats	Best places avg.
See Bristol homes for sale		
Test scores reading (% above/below state average)	28.3%	22.9%
Test scores math (% above/below average)	17.6%	22.9%
Personal crime incidents (per 1,000)	4	2
Property crime incidents (per 1,000)	24	24
Restaurants (within 15 miles)	2,338	2,967
High temp in July ° F	83.8 °	86.2 °
Low temp in Jan ° F	16.4 °	21.3 °
Median age	38.5	35.3

From the August 2010 issue
Notes: *County data

(I) Income tax notes:
For joint returns, the taxes are twice the tax imposed on half the income. Combined personal exemptions and standard deduction. An additional tax credit is allowed ranging from 75% to 0% based on state adjusted gross income. Exemption amounts are phased out for higher income taxpayers until they are eliminated for households earning over \$61,000.

Advertisement



Print Powered By FormatDynamics™